



Sewage Disposal in the Lake Worth Lagoon Watershed

TIMOTHY G. MAYER, RS, MPH, DIRECTOR
DIVISION OF ENVIRONMENTAL PUBLIC HEALTH
FDOH – PALM BEACH COUNTY

Sewage Disposal Methods

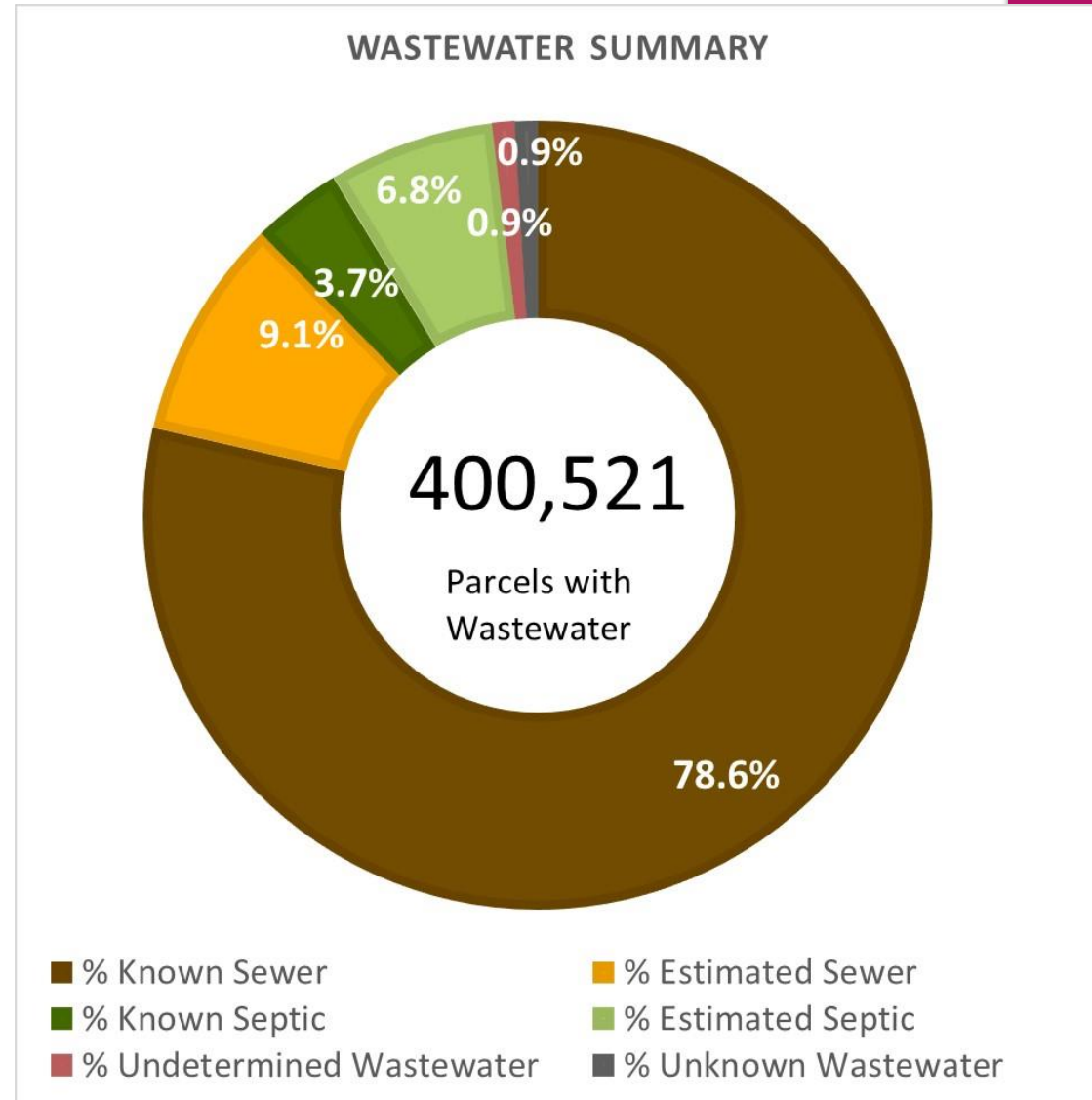
- ▶ OSTDS (Onsite Sewage Treatment and Disposal Systems)
 - ▶ Septic Tanks
 - ▶ Aerobic Treatment Units
 - ▶ Performance-based Treatment and Disposal Systems
 - ▶ Individual (2.6 million systems in operation statewide)
- ▶ Municipal
 - ▶ Centrally collected, treated and disposed
 - ▶ Community

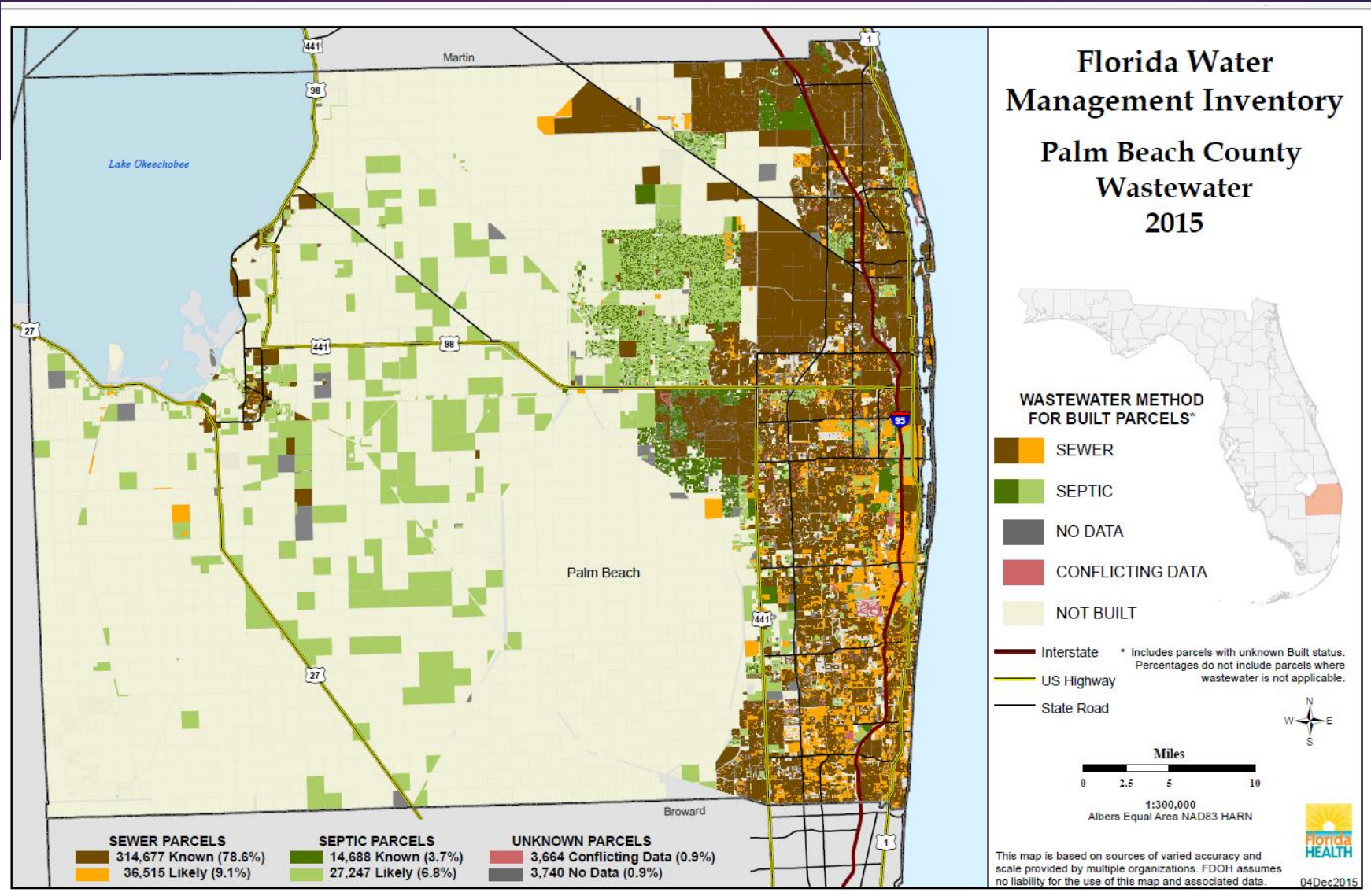
Sewage Disposal Methods

- ▶ OSTDS (Onsite Sewage Treatment and Disposal Systems)
 - ▶ Statewide – 30% of the population
 - ▶ Palm Beach County – 10.5% of the properties
 - ▶ Lake Worth Lagoon – 22%
- ▶ Municipal (central collection) wastewater treatment
 - ▶ Statewide – 70%
 - ▶ Palm Beach County – 87.7%
 - ▶ Lake Worth Lagoon – 66%

Sewage Disposal in Palm Beach County

Sewer
v
Septic





OSTDS in the LWL Watershed

Some pockets
of OSTDS
still exist



Juno Beach

Mangonia Park

Lake Worth

Manalapan

Ocean Ridge

OSTDS Construction

- ▶ In the last 12 months
 - ▶ 27 new systems
 - ▶ 57 repaired systems
 - ▶ 53 abandoned systems

Florida Water Management Inventory

- ▶ <http://floridahealth.gov/FLWMI>
- ▶ <https://gis.flhealth.gov/FLWMI/>
- ▶ <http://www.floridahealth.gov/environmental-health/onsite-sewage/research/flwmi/palm-beach.html>
- ▶ **Download the project maps and data.**

FWMI

Florida Water Management Inventory

